



Hoosier Academy, Inc.
Regular Board Meeting April 23rd, 2019
5:30 p.m.

I. PRELIMINARY

Upon determining the presence of a quorum, Board President Marske called the meeting to order at 5:45 P.M. Tuesday, April 23rd, 2019.

A. ROLL CALL

Name	Present	Absent	Arrived Late	Departed Early	Electronic Participation
John Marske	x				
George Giltner		x			
Gary Meyer	x				
Maurice Boler	x				
Michelle Study-Campbell	x				

Others in Attendance

K12 Admin Representatives	HA Staff	Community Members
Kevin Chavous Darren Reed Patrick Michel Enrico Rudolph Liz Roth	Jill Landers Julia O'Sullivan Connie Smith Gena Stockard	Amelia Torres Jennifer Waterman Patsy Woods Robert Scott

Board Mission:

- 1) make sure that our school accomplishes the outcomes it was chartered to produce (i.e. student achievement) and
- 2) Make sure that nothing illegal, unethical, or imprudent occurs.

B. Approval of the March 21st, 2019 board meeting minutes. Motion to approve resolution, seconded. Voice vote. Passed.

C. Adopt Board Agenda for April 23rd, 2019 meeting. Motion to approve agenda with correction to next board meeting as May 21, 2019 not May 28, 2019, seconded. Voice vote. Passed.

D. Oral Communications: Non-agenda items: no individual presentation shall be for more than three (3) minutes and the total time for this purpose shall not exceed fifteen (15) minutes. No public comment.

II. HOOSIER ACADEMY- GOVERNANCE AND ORGANIZATION

- A. **Resolution 2019-4 Approval of Calendar for 2019-20.** Motion to approve resolution, seconded. Voice vote. Passed.
- B. **Resolution 2019-5 Disposal of Computer Equipment Deemed Worthless.** Motion to approve resolution, seconded. Voice vote. Passed.
- C. **Resolution 2019-6 Change Elementary School Building Name.** Motion to approve resolution, seconded. Voice vote. Passed.
- D. **Resolution 2019-7 Approval of Sixth Amendment to Lease Agreement (Caito Road).** Motion to approve resolution, seconded. Voice vote. Passed.

III. HOOSIER ACADEMY - FINANCIAL, LEGAL, AND SCHOOL OPERATIONS

- A. Financials, Enrico Rudolph It was moved to accept March Financials subject for review and audit, seconded. Voice vote. Passed. Motion to approve March vouchers, seconded. Voice vote. Passed.
- B. Building Leases Update, Elizabeth Lamey – Reviewed and accepted
- C. Community Report Jennifer Waterman - Reviewed and accepted
- D. Enrollment Report, Julia O’Sullivan – Reviewed and accepted
- E. Compliance Report, Julia O’Sullivan – Reviewed and accepted
- F. Personnel Report, Julia O’Sullivan – Reviewed and accepted

IV. HOOSIER ACADEMY - SCHOOL AND STUDENT OUTCOMES

- A. Academic & FAST Report, Jill Landers - Reviewed and accepted
- B. Link to data tracker <https://docs.google.com/spreadsheets/d/1827IPBPdyve-mXAWiilGpuYWCMS68eyFZFUbX06rgWg/edit#gid=846496860>
- C. CTE Presentation – Connie Smith
- D. CTE Information – Liz Roth/Pat Michel

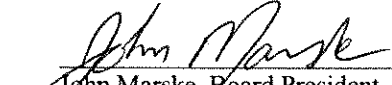
V. BOARD DEVELOPMENT

- 1. Items for next month agenda

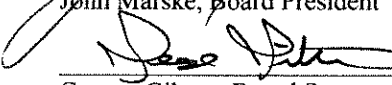
VI. Additional Materials

NEXT MEETING: May 21, 2019 ~~May 28, 2019~~ at 5:30pm Franklin Rd.

Signatures for Approval of the April 23, 2019 Minutes.



 John Marske, Board President



 George Giltner, Board Secretary

5/21/19
 Date

5/21/19
 Date

HOOSIER ACADEMY, INC.

RESOLUTION 2019 – 4

APPROVAL OF THE 2019-20 SCHOOL CALENDAR

WHEREAS, the Hoosier Academy Schools Administration Team, with input from teachers and families, has prepared and vetted the School Calendar for the 2019-20 school year for Hoosier Academy – Indianapolis and the Insight School of Indiana, which calendar is attached hereto as Exhibit A (“2019-20 School Calendar”); and

WHEREAS, the Board of Directors has reviewed and considered the 2019-20 School Calendar.

IT IS, THEREFORE, RESOLVED that the Board of Directors approves the 2019-20 School Calendar as presented.

Voice Vote:

Ayes: 5 No: 0

Date: _____

Certification of Board Secretary: Page Hill

EXHIBIT A

2019-20 SCHOOL CALENDAR

Hoosier Academy Network of Schools – FINAL DRAFT

2019-2020 School Calendar

July 2019						
Su	M	Tu	W	Th	F	S
	1	2	3	4	5	6
7	8	9	10	11	12	13
14	15	16	17	18	19	20
21	22	23	24	25	26	27
28	29	30	31			

August 2019						
Su	M	Tu	W	Th	F	S
				1	2	3
4	5	6	7	8	9	10
11	12	13	14	15	16	17
18	19	20	21	22	23	24
25	26	27	28	29	30	31

September 2019						
Su	M	Tu	W	Th	F	S
1	2	3	4	5	6	7
8	9	10	11	12	13	14
15	16	17	18	19	20	21
22	23	24	25	26	27	28
29	30					

October 2019						
Su	M	Tu	W	Th	F	S
		1	2	3	4	5
6	7	8	9	10	11	12
13	14	15	16	17	18	19
20	21	22	23	24	25	26
27	28	29	30	31		

November 2019						
Su	M	Tu	W	Th	F	S
					1	2
3	4	5	6	7	8	9
10	11	12	13	14	15	16
17	18	19	20	21	22	23
24	25	26	27	28	29	30

December 2019						
Su	M	Tu	W	Th	F	S
1	2	3	4	5	6	7
8	9	10	11	12	13	14
15	16	17	18	19	20	21
22	23	24	25	26	27	28
29	30	31				

January 2020						
Su	M	Tu	W	Th	F	S
			1	2	3	4
5	6	7	8	9	10	11
12	13	14	15	16	17	18
19	20	21	22	23	24	25
26	27	28	29	30	31	

February 2020						
Su	M	Tu	W	Th	F	S
						1
2	3	4	5	6	7	8
9	10	11	12	13	14	15
16	17	18	19	20	21	22
23	24	25	26	27	28	29

March 2020						
Su	M	Tu	W	Th	F	S
1	2	3	4	5	6	7
8	9	10	11	12	13	14
15	16	17	18	19	20	21
22	23	24	25	26	27	28
29	30	31				

April 2020						
Su	M	Tu	W	Th	F	S
			1	2	3	4
5	6	7	8	9	10	11
12	13	14	15	16	17	18
19	20	21	22	23	24	25
26	27	28	29	30		

May 2020						
Su	M	Tu	W	Th	F	S
					1	2
3	4	5	6	7	8	9
10	11	12	13	14	15	16
17	18	19	20	21	22	23
24	25	26	27	28	29	30
31						

June 2020						
Su	M	Tu	W	Th	F	S
	1	2	3	4	5	6
7	8	9	10	11	12	13
14	15	16	17	18	19	20
21	22	23	24	25	26	27
28	29	30				

Hoosier Academy at Indianapolis (Caito)	
Elementary (Grades K-5)	Middle School (Grades 6-8)
Building Days: Thurs. & Fri. 8:15am – 3:45pm	Building Days: Tues. & Wed. 8:00am – 4:30pm
Virtual Days: Mon., Tues., Wed. 8:15am – 2:15pm	Virtual Days: Mon., Thurs., Fri. 8:00am – 3:00pm
Insight School of Indiana (ISIN)	August 6 th – First Student Day
Middle and High School (Grades 7-12)	May 27 th – Last Student Day
Virtual: Mon. – Fri. 9:00am – 4:00pm EST	June 6 th – Graduation
Mon. – K12 curriculum work day	End of Quarter/Semester
"A" Days – Tues. & Thurs., "B" Days – Wed. & Fri.	School Closed/Holiday
1 st (Aug. 1 st) and Last (Jun. 3 rd) Day for Teachers	Teacher Work Day (no school for students)

HOOSIER ACADEMY, INC.

Resolution Approving
Computer Disposal

Resolution No. 2019 – 5

WHEREAS, Indiana Code § 5-22-22-8 permits the personal property of a governmental body to be demolished or junked if the value of the personal property is less than the estimated cost to sell and transport the property; and

WHEREAS, Hoosier Academy, Inc. (the “Corporation”) owns the non-working computers and related equipment (collectively, “Equipment”) described on the attached Exhibit A, and the monetary value of such Equipment has been determined to be less than the estimated cost of its sale and transport; and

WHEREAS, Green Wave Computer Recycling will dispose of the Equipment in a safe and secure manner at no cost to Hoosier Academy; and

WHEREAS, the Board of Directors deems it to be in the best interest of the Corporation to deliver the Equipment to Green Wave Computer Recycling to be recycled and/or disposed.

IT IS THEREFORE RESOLVED that the Head of Schools or her designee is hereby authorized to take any and all steps necessary or desirable to effect the recycling and/or disposal of the Equipment by Green Wave Computer Recycling.

Voice Vote:

Ayes: 5 No: 0

Date: _____


Certification of Board Secretary: 

EXHIBIT A

EQUIPMENT TO BE RECYCLED

Make/Model	Serial Number	Asset Tag #	Notes	MISRP Today	Release Date	Reason for Recycling
Acer Notebook Computer	SY1368000351	IMPL0203	Acer Notebook, Windows XP (MS Not supported)/Win 7, No Regional Image made for computer.			
HP Probook 4520s	2CE1130FMG	GEN0203	Windows 7, No Regional Image, No utilities, Not enough RAM for current applications	249.69	2010	Cost of RAM, HDD Failures, Possible other hardware failures for out of support parts cost.
HP Probook 4520s	2CE1140W02	PLAN0176	Windows 7, No Regional Image, No utilities, Not enough RAM for current applications	249.69	2010	Cost of RAM, HDD Failures, Possible other hardware failures for out of support parts cost.
HP Probook 4520s	2CE1130FPN	IMPL0337	Windows 7, No Regional Image, No utilities, Not enough RAM for current applications	249.69	2010	Cost of RAM, HDD Failures, Possible other hardware failures for out of support parts cost.
HP Probook 4520s	2CE1140VWD	PLAN0223	Windows 7, No Regional Image, No utilities, Not enough RAM for current applications	249.69	2010	Cost of RAM, HDD Failures, Possible other hardware failures for out of support parts cost.
HP Probook 4520s	2CE1140VYH	GEN0190/ MPL0341	Windows 7, No Regional Image, No utilities, Not enough RAM for current applications	249.69	2010	Cost of RAM, HDD Failures, Possible other hardware failures for out of support parts cost.
HP Probook 4520s	2CE1140VY5	IMPL0338	Windows 7, No Regional Image, No utilities, Not enough RAM for current applications	249.69	2010	Cost of RAM, HDD Failures, Possible other hardware failures for out of support parts cost.
HP Probook 4520s	2CE1140VSX	IMPL0340	Windows 7, No Regional Image, No utilities, Not enough RAM for current applications	249.69	2010	Cost of RAM, HDD Failures, Possible other hardware failures for out of support parts cost.
HP Probook 4520s	2CE1140VZ1	PLAN0174	Windows 7, No Regional Image, No utilities, Not enough RAM for current applications	249.69	2010	Cost of RAM, HDD Failures, Possible other hardware failures for out of support parts cost.

Make/Model	Serial Number	Asset Tag #	Notes	MSRP Today	Release Date	Reason for Recycling
HP Probook 4520s	2CE1130FLB	WALT0027	Windows 7, No Regional Image, No utilities, Not enough RAM for current applications	249.69	2010	Cost of RAM, HDD Failures, Possible other hardware failures for out of support parts cost.
HP Probook 4530s	CNU20205FH	GEN0226	Windows 7, No Regional Image, No utilities, Not enough RAM for current applications	349.99	2011	Cost of RAM, HDD Failures, Possible other hardware failures for out of support parts cost.
HP Probook 4530s	CNU202073Q	GEN0230	Windows 7, No Regional Image, No utilities, Not enough RAM for current applications	349.99	2011	Cost of RAM, HDD Failures, Possible other hardware failures for out of support parts cost.
HP Probook 4530s	CNU20204TP	WALT0103	Windows 7, No Regional Image, No utilities, Not enough RAM for current applications	349.99	2011	Cost of RAM, HDD Failures, Possible other hardware failures for out of support parts cost.
HP Probook 4530s	CNU20204CX	1100	Windows 7, No Regional Image, No utilities, Not enough RAM for current applications	349.99	2011	Cost of RAM, HDD Failures, Possible other hardware failures for out of support parts cost.
HP Probook 4530s	CNU2020490	GEN0217	Windows 7, No Regional Image, No utilities, Not enough RAM for current applications	349.99	2011	Cost of RAM, HDD Failures, Possible other hardware failures for out of support parts cost.
HP Probook 4530s	CNU202034M	IMPL0347	Windows 7, No Regional Image, No utilities, Not enough RAM for current applications	349.99	2011	Cost of RAM, HDD Failures, Possible other hardware failures for out of support parts cost.
HP Probook 4520s	2CE1140VY6	PLAN0171	Windows 7, No Regional Image, No utilities, Not enough RAM for current applications	249.69	2010	Cost of RAM, HDD Failures, Possible other hardware failures for out of support parts cost.
HP Probook 4520s	2CE1130FJC	WALT0025	Windows 7, No Regional Image, No utilities, Not enough RAM for current applications	249.69	2010	Cost of RAM, HDD Failures, Possible other hardware failures for out of support parts cost.

Make/Model	Serial Number	Asset Tag #	Notes	MSRP Today	Release Date	Reason for Recycling
HP Probook 4520s	2CE1140VX9	PLAN0172	Windows 7, No Regional Image, No utilities, Not enough RAM for current applications	249.69	2010	Cost of RAM, HDD Failures, Possible other hardware failures for out of support parts cost.
HP Probook 4520s	2CE1140VV7	PLAN0154	Windows 7, No Regional Image, No utilities, Not enough RAM for current applications	249.69	2010	Cost of RAM, HDD Failures, Possible other hardware failures for out of support parts cost.
HP Probook 4520s	2CE1140VV1	GEN0179	Windows 7, No Regional Image, No utilities, Not enough RAM for current applications	249.69	2010	Cost of RAM, HDD Failures, Possible other hardware failures for out of support parts cost.
HP Probook 4520s	2CE1140VYQ	PLAN0175	Windows 7, No Regional Image, No utilities, Not enough RAM for current applications	249.69	2010	Cost of RAM, HDD Failures, Possible other hardware failures for out of support parts cost.
HP Probook 4520s	2CE1140VVK	PLAN0248	Windows 7, No Regional Image, No utilities, Not enough RAM for current applications	249.69	2010	Cost of RAM, HDD Failures, Possible other hardware failures for out of support parts cost.
HP Probook 4520s	2CE1240VBX	WALT0059	Windows 7, No Regional Image, No utilities, Not enough RAM for current applications	249.69	2010	Cost of RAM, HDD Failures, Possible other hardware failures for out of support parts cost.
HP 635	5CB2170SJ8	IMPL0349	Windows 7, No Regional Image, No utilities, Not enough RAM for current applications	NA	2011	Cost of RAM, HDD Failures, Possible other hardware failures for out of support parts cost.
HP 635	5CB2170W41	IMPL0353	Windows 7, No Regional Image, No utilities, Not enough RAM for current applications	NA	2011	Cost of RAM, HDD Failures, Possible other hardware failures for out of support parts cost.
HP Probook 4520s	2CE1130FLZ	GEN0209	Windows 7, No Regional Image, No utilities, Not enough RAM for current applications	249.69	2011	Cost of RAM, HDD Failures, Possible other hardware failures for out of support parts cost.

Make/Model	Serial Number	Asset Tag #	Notes	MSRP Today	Release Date	Reason for Recycling
HP Probook 4520s	2CE1140VVF	PLAN0153	Windows 7, No Regional Image, No utilities, Not enough RAM for current applications	249.69	2011	Cost of RAM, HDD Failures, Possible other hardware failures for out of support parts cost.
HP Probook 4520s	2CE1130FQ3	WALT0028	Windows 7, No Regional Image, No utilities, Not enough RAM for current applications	249.69	2011	Cost of RAM, HDD Failures, Possible other hardware failures for out of support parts cost.
HP Probook 4520s	2CE1140VWX	PLAN0158	Windows 7, No Regional Image, No utilities, Not enough RAM for current applications	249.69	2011	Cost of RAM, HDD Failures, Possible other hardware failures for out of support parts cost.
HP Probook 4520s	2CE1140VZ3	PLAN0157	Windows 7, No Regional Image, No utilities, Not enough RAM for current applications	249.69	2011	Cost of RAM, HDD Failures, Possible other hardware failures for out of support parts cost.
HP Probook 4520s	2CE1140VZ7	PLAN0232	Windows 7, No Regional Image, No utilities, Not enough RAM for current applications	249.69	2011	Cost of RAM, HDD Failures, Possible other hardware failures for out of support parts cost.
HP Probook 4520s	2CE1140VVF	PLAN0047	Windows 7, No Regional Image, No utilities, Not enough RAM for current applications	249.69	2011	Cost of RAM, HDD Failures, Possible other hardware failures for out of support parts cost.
HP Probook 4520s	2CE1140VZ6	GEN0177	Windows 7, No Regional Image, No utilities, Not enough RAM for current applications	249.69	2011	Cost of RAM, HDD Failures, Possible other hardware failures for out of support parts cost.
HP Compaq 610	CNU9239D6V	IMPL0348	Windows XP, No regional Image, No Utilities, Not enough RAM for current applications	NA	NA	Discontinued
Lenovo Thinkpad E550	1s20DF0030USPF09T1GX	IMPL0304	BAD Display, Ram Used as parts and parted out	NA	2015	Computer being phased out.
Lenovo Thinkpad E551	1s20DF0030USPF08IG8B	IMPL0600	BAD Display, Ram Used as parts and parted out	NA	2015	Computer being phased out.

Make/Model	Serial Number	Asset Tag #	Notes	MSRP Today	Release Date	Reason for Recycling
Lenovo SL500	1S274673UL3AVW6X	IMPL0021	BAD HDD, No Regional Image, No docking station port		2009	Phased out
HP Probook 4520s	2CE1140VXR	GEN0191	Windows 7, No Regional Image, No utilities, Not enough RAM for current applications	249.69	2011	Cost of RAM, HDD Failures, Possible other hardware failures for out of support parts cost.
HP Probook 4520s	2CE1140VYC	PLAN0151	Windows 7, No Regional Image, No utilities, Not enough RAM for current applications	249.69	2011	Cost of RAM, HDD Failures, Possible other hardware failures for out of support parts cost.
HP Probook 4520s	2CE1130FHV	GEN0210	Windows 7, No Regional Image, No utilities, Not enough RAM for current applications	249.69	2011	Cost of RAM, HDD Failures, Possible other hardware failures for out of support parts cost.
HP Probook 4520s	2CE1140VVV	GEN0192	Windows 7, No Regional Image, No utilities, Not enough RAM for current applications	249.69	2011	Cost of RAM, HDD Failures, Possible other hardware failures for out of support parts cost.
HP Probook 4520s	2CE1140VWH	PLAN0231	Windows 7, No Regional Image, No utilities, Not enough RAM for current applications	249.69	2011	Cost of RAM, HDD Failures, Possible other hardware failures for out of support parts cost.
HP Probook 4520s	2CE1140VWL	PLAN0169	Windows 7, No Regional Image, No utilities, Not enough RAM for current applications	249.69	2011	Cost of RAM, HDD Failures, Possible other hardware failures for out of support parts cost.
HP Probook 4520s	2CE113094W	GEN0198	Windows 7, No Regional Image, No utilities, Not enough RAM for current applications	249.69	2011	Cost of RAM, HDD Failures, Possible other hardware failures for out of support parts cost.
HP Probook 4520s	2CE1240VCY	1087	Windows 7, No Regional Image, No utilities, Not enough RAM for current applications	249.69	2011	Cost of RAM, HDD Failures, Possible other hardware failures for out of support parts cost.

Make/Model	Serial Number	Asset Tag#	Notes	MSRP Today	Release Date	Reason for Recycling
HP Probook 4520s	2CE1130FKV	IMPL0339	Windows 7, No Regional Image, No utilities, Not enough RAM for current applications	249.69	2011	Cost of RAM, HDD Failures, Possible other hardware failures for out of support parts cost.
HP Probook 4520s	2CE1130FKH	GEN0199	Windows 7, No Regional Image, No utilities, Not enough RAM for current applications	249.69	2011	Cost of RAM, HDD Failures, Possible other hardware failures for out of support parts cost.
HP Probook 4520s	2CE1140VXP	PLAN0233	Windows 7, No Regional Image, No utilities, Not enough RAM for current applications	249.69	2011	Cost of RAM, HDD Failures, Possible other hardware failures for out of support parts cost.
HP Probook 4520s	2CE1140VWT	PLAN0229	Windows 7, No Regional Image, No utilities, Not enough RAM for current applications	249.69	2011	Cost of RAM, HDD Failures, Possible other hardware failures for out of support parts cost.
HP Probook 4520s	2CE1140VVB	PLAN0250	Windows 7, No Regional Image, No utilities, Not enough RAM for current applications	249.69	2011	Cost of RAM, HDD Failures, Possible other hardware failures for out of support parts cost.
HP Probook 4520s	2CE1140VY2	PLAN0168	Windows 7, No Regional Image, No utilities, Not enough RAM for current applications	249.69	2011	Cost of RAM, HDD Failures, Possible other hardware failures for out of support parts cost.
HP Probook 4520s	2CE1140VVC	PLAN0048	Windows 7, No Regional Image, No utilities, Not enough RAM for current applications	249.69	2011	Cost of RAM, HDD Failures, Possible other hardware failures for out of support parts cost.
HP Probook 4520s	2CE1140R13	PLAN0227	Windows 7, No Regional Image, No utilities, Not enough RAM for current applications	249.69	2011	Cost of RAM, HDD Failures, Possible other hardware failures for out of support parts cost.
HP Probook 4520s	2CE1140VV5	GEN0175	Windows 7, No Regional Image, No utilities, Not enough RAM for current applications	249.69	2011	Cost of RAM, HDD Failures, Possible other hardware failures for out of support parts cost.

Make/Model	Serial Number	Asset Tag #	Notes	MSRP (Today)	Release Date	Reason for Recycling
HP Probook 4520s	2CE1240VCO	WALT0056	Windows 7, No Regional Image, No utilities, Not enough RAM for current applications	249.69	2011	Cost of RAM, HDD Failures, Possible other hardware failures for out of support parts cost.
Lenovo T420	1S4177Q5UR8Z9WH7	IMPL0363	No HDD, No Regional Image	299.99	2011	Parts will cost to much and no image
Lenono T420	1S2516ADUR80MTD4	1302	No HDD, No Regional Image	299.99	2011	Parts will cost to much and no image
Lenovo W500	1S40624FUR8YA480	IMPL0333	No battery, NoHDD	100	2008	Parts will cost to much and no image
Lenono SL510	1S28472PULRNT091	IMPL0346	Bad display	80	2019	Parts will cost to much and no image
Lenovo R500	1S2714A7UR8XB985	IMPL0368	No image/phased out/Not enough resources for current applications	50	2008	Parts will cost to much and no image
Lenono R501	1S2714A7UR8HDH06	IMPL0328	No image/phased out/Not enough resources for current applications	50	2008	Parts will cost to much and no image
Lenono SL500	1S2746MJUMLTCL99	IMPL0345	No image/phased out/Not enough resources for current applications	50	2009	Parts will cost to much and no image
Lenono SL500	1S274673UL3A6800	IMPL0052	No image/phased out/Not enough resources for current applications	50	2009	Parts will cost to much and no image
Lenono SL500	1S2746MJUMLDBHE6	IMPL0324	No image/phased out/Not enough resources for current applications	50	2009	Parts will cost to much and no image
Lenono SL500	1S274673UL3B7722	PLAN0022	No image/phased out/Not enough resources for current applications	50	2009	Parts will cost to much and no image
Lenono SL500	1S274673UL3AVW6W	IMPL0001	No image/phased out/Not enough resources for current applications	50	2009	Parts will cost to much and no image
Lenono SL500	1S274673UL3AVW6M	IMPL0028	No image/phased out/Not enough resources for current applications	50	2009	Parts will cost to much and no image
Lenono SL500	1S274673UL3AVW7G	IMPL0043	No image/phased out/Not enough resources for current applications	50	2009	Parts will cost to much and no image
Lenono SL500	1S274673UL3AVX0F	IMPL0020	No image/phased out/Not enough resources for current applications	50	2009	Parts will cost to much and no image
Lenono SL500	1S274673UL3AVW7H	IMPL0024	No image/phased out/Not enough resources for current applications	50	2009	Parts will cost to much and no image
Lenono SL500	1S274673UL3AVX0X	IMPL0046	No image/phased out/Not enough resources for current applications	50	2009	Parts will cost to much and no image

Make/Model	Serial Number	Asset Tag #	Notes	MSRP Today	Release Date	Reason for Recycling
Lenovo SL500	1S274673UL3AVX0A	IMPL0033	No image/phased out/Not enough resources for current applications	50	2009	Parts will cost to much and no image
Lenovo SL500	1S274673UL3AVV7K	IMPL0031	No image/phased out/Not enough resources for current applications	50	2009	Parts will cost to much and no image
Lenovo SL500	1S2746MJUMLTEM02	1094	No image/phased out/Not enough resources for current applications	50	2009	Parts will cost to much and no image
Lenovo SL500	1S274673UL3AVX0B	IMPL0009	No image/phased out/Not enough resources for current applications	50	2009	Parts will cost to much and no image
Lenovo SL500	1S2746MJUMLTEL85	IMPL0325	No image/phased out/Not enough resources for current applications	50	2009	Parts will cost to much and no image
Lenovo SL500	1S274673UL3AVX0E	IMPL0029	No image/phased out/Not enough resources for current applications	50	2009	Parts will cost to much and no image
Lenovo SL500	1S274673UL3AVW8E	IMPL0019	No image/phased out/Not enough resources for current applications	50	2009	Parts will cost to much and no image
Lenovo T410	1S2516ADUR84FN6A	IMPL0334	No image/phased out/Not enough resources for current applications	139	2010	Parts will cost to much and no image
Lenovo T410	1S2516ADUR845R4B	IMPL0335	No image/phased out/Not enough resources for current applications	139	2010	Parts will cost to much and no image
Lenovo R61i	1S7650EUL3EF946	IMPL0327	No image/phased out/Not enough resources for current applications	70	2007	Parts will cost to much and no image
Lenovo SL500	1S274673UL3AVW8Y	IMPL0022	No image/phased out/Not enough resources for current applications	50	2009	Parts will cost to much and no image
Lenovo SL500	1S274673UL3AVV7C	IMPL0010	No image/phased out/Not enough resources for current applications	50	2009	Parts will cost to much and no image
Lenovo R61i	1S7650DGUL3AW873	IMPL0329	No image/phased out/Not enough resources for current applications	70	2007	Parts will cost to much and no image
Lenovo T410	1S2516ADUR80MTY5	IMPL0330	No image/phased out/Not enough resources for current applications	139	2010	Parts will cost to much and no image
Lenovo T410	1S2516ADUR89LA39	IMPL0332	No image/phased out/Not enough resources for current applications	139	2010	Parts will cost to much and no image
Lenovo T410	1S2516ADUR845R6Z	IMPL0331	No image/phased out/Not enough resources for current applications	139	2010	Parts will cost to much and no image
Lenovo T410	1S2516ADUR845R4N	IMPL0336	No image/phased out/Not enough resources for current applications	139	2010	Parts will cost to much and no image
Lenovo T410	1S2516ADUR84FN5C	IMPL0343	No image/phased out/Not enough resources for current applications	139	2010	Parts will cost to much and no image

Make/Model	Serial Number	Asset Tag#	Notes	MSRP Today	Release Date	Reason for Recycling
Lenovo T420s	1s4174WNKR9MD7BZ	IMPL0344	No image/phased out/Not enough resources for current applications	200	2010	Parts will cost to much and no image
HP Probook 4520s	2CE1130FHR	GEN0193	Windows 7, No Regional Image, No utilities, Not enough RAM for current applications	249.69	2010	Cost of RAM, HDD Failures, Possible other hardware failures for out of support parts cost.
Lenovo R61i	1S7650DGUL3AX146	IMPL0365	No image/phased out/Not enough resources for current applications	70	2007	Parts will cost to much and no image
Lenovo T410	1S2516ADUR80MTC2	IMPL0342	No image/phased out/Not enough resources for current applications	139	2010	Parts will cost to much and no image
Lenovo T410	1S2516ADUR89LA49	PLAN0236	No image/phased out/Not enough resources for current applications	139	2010	Parts will cost to much and no image
Lenovo T410	1S2516ADUR845R3B	PLAN0241	No image/phased out/Not enough resources for current applications	139	2010	Parts will cost to much and no image
Lenovo T410	1S2516ADUR89LA35	IMPL0364	No image/phased out/Not enough resources for current applications	139	2010	Parts will cost to much and no image
Lenovo R61i	1S7650DGUL3AX117	PLAN0016	No image/phased out/Not enough resources for current applications	70	2007	Parts will cost to much and no image
Lenovo R61i	1S7650DGUL3AX087	1096	No image/phased out/Not enough resources for current applications	70	2007	Parts will cost to much and no image
Lenovo R61i	1S7650DGUL3AX104	PLAN0025	No image/phased out/Not enough resources for current applications	70	2007	Parts will cost to much and no image
Aacer Asdpire One 722-0369	LUSFT021752300A4D43400	IMPL1017	No Regional Image, 2GB RAM note enough resources for current applications,	148	2011	Parts Costs/No image + Hardware failures + Cracked cases/inside
Aacer Asdpire One 722-0369	LUSFT021752300A4323400	WALT0123	No Regional Image, 2GB RAM note enough resources for current applications,	148	2011	Parts Costs/No image + Hardware failures + Cracked cases/inside
Aacer Asdpire One 722-0369	NUSFTA0042280F6F63400	IMPL0969	No Regional image, 2GB RAM note enough resources for current applications,	148	2011	Parts Costs/No image + Hardware failures + Cracked cases/inside
Aacer Asdpire One 722-0369	NUSFTA0042280903D3400	NA	No Regional Image, 2GB RAM note enough resources for current applications,	148	2011	Parts Costs/No image + Hardware failures + Cracked cases/inside

Make/Model	Serial Number	Asset Tag #	Notes	MSRP Today	Release Date	Reason for Recycling
Aacer Asdpire One 722-0369	NUSFTAA004222084AA3400	IMPL0154	No Regional Image, 2GB RAM note enough resources for current applications,	148	2011	Parts Costs/No image + Hardware failures + Cracked cases/inside
Aacer Asdpire One 722-0369	NUSFTAA004222086A263400	IMPL0219	No Regional Image, 2GB RAM note enough resources for current applications,	148	2011	Parts Costs/No image + Hardware failures + Cracked cases/inside
Aacer Asdpire One 722-0369	LUSFT021752300706E3400	IMPL0955	No Regional Image, 2GB RAM note enough resources for current applications,	148	2011	Parts Costs/No image + Hardware failures + Cracked cases/inside
Aacer Asdpire One 722-0369	NUSFTAA0042228073213400	IMPL1047	No Regional Image, 2GB RAM note enough resources for current applications,	148	2011	Parts Costs/No image + Hardware failures + Cracked cases/inside
Aacer Asdpire One 722-0369	NUSFTAA00422280921D3400	NA	No Regional Image, 2GB RAM note enough resources for current applications,	148	2011	Parts Costs/No image + Hardware failures + Cracked cases/inside
Aacer Asdpire One 722-0369	NUSFTAA004222088663400	IMPL0971	No Regional Image, 2GB RAM note enough resources for current applications,	148	2011	Parts Costs/No image + Hardware failures + Cracked cases/inside
Aacer Asdpire One 722-0369	NUSFTAA00422280D1213400	NA	No Regional Image, 2GB RAM note enough resources for current applications,	148	2011	Parts Costs/No image + Hardware failures + Cracked cases/inside
Aacer Asdpire One 722-0369	LUSFT0217523006D883400	IMPL0976	No Regional Image, 2GB RAM note enough resources for current applications,	148	2011	Parts Costs/No image + Hardware failures + Cracked cases/inside
Aacer Asdpire One 722-0369	NUSFTAA0042228079443400	IMPL0935	No Regional Image, 2GB RAM note enough resources for current applications,	148	2011	Parts Costs/No image + Hardware failures + Cracked cases/inside
Aacer Asdpire One 722-0369	NUSFTAA004222809B963400	IMPL0217	No Regional Image, 2GB RAM note enough resources for current applications,	148	2011	Parts Costs/No image + Hardware failures + Cracked cases/inside
OEM N10L2-WX	SY0338430031	IMPL0132	No Regional Image, 2GB RAM note enough resources for current applications,	100	NA	Parts Costs/No image + Hardware failures + Cracked cases/inside
OEM N10L2-WX	SY0338430023	IMPL0130	No Regional Image, 2GB RAM note enough resources for current applications,	100	NA	Parts Costs/No image + Hardware failures + Cracked cases/inside

Make/Model	Serial Number	Asset Tag #	Notes	MSRP Today	Release Date	Reason for Recycling
OEM N10L2-WX	SY0338430028	IMPL0124	No Regional Image, 2GB RAM note enough resources for current applications,	100	NA	Parts Costs/No image + Hardware failures + Cracked cases/inside
OEM N10L2-WX	SY0338430017	IMPL0105	No Regional Image, 2GB RAM note enough resources for current applications,	100	NA	Parts Costs/No image + Hardware failures + Cracked cases/inside
OEM N10L2-WX	SY0338430010	IMPL0107	No Regional Image, 2GB RAM note enough resources for current applications,	100	NA	Parts Costs/No image + Hardware failures + Cracked cases/inside
OEM N10L2-WX	SY0338430011	IMPL0127	No Regional Image, 2GB RAM note enough resources for current applications,	100	NA	Parts Costs/No image + Hardware failures + Cracked cases/inside
OEM N10L2-WX	SY0338430007	IMPL0134	No Regional Image, 2GB RAM note enough resources for current applications,	100	NA	Parts Costs/No image + Hardware failures + Cracked cases/inside
OEM N10L2-WX	SY0338430018	IMPL0123	No Regional Image, 2GB RAM note enough resources for current applications,	100	NA	Parts Costs/No image + Hardware failures + Cracked cases/inside
OEM N10L2-WX	SY0338430012	IMPL0121	No Regional Image, 2GB RAM note enough resources for current applications,	100	NA	Parts Costs/No image + Hardware failures + Cracked cases/inside
OEM N10L2-WX	SY0338430006	IMPL0114	No Regional Image, 2GB RAM note enough resources for current applications,	100	NA	Parts Costs/No image + Hardware failures + Cracked cases/inside
OEM N10L2-WX	SY0338430026	IMPL0128	No Regional Image, 2GB RAM note enough resources for current applications,	100	NA	Parts Costs/No image + Hardware failures + Cracked cases/inside
OEM N10L2-WX	SY0338430004	IMPL0110	No Regional Image, 2GB RAM note enough resources for current applications,	100	NA	Parts Costs/No image + Hardware failures + Cracked cases/inside
OEM N10L2-WX	SY0338430022	IMPL0111	No Regional Image, 2GB RAM note enough resources for current applications,	100	NA	Parts Costs/No image + Hardware failures + Cracked cases/inside
OEM N10L3-WX	SY1368000356	NA	No Regional Image, 2GB RAM note enough resources for current applications,	50	NA	Parts Costs/No image + Hardware failures + Cracked cases/inside

Make/Model	Serial Number	Asset Tag #	Notes	MSRP Today	Release Date	Reason for Recycling
OEM N10L3-WX	SY1368000377	IMPL0212	No Regional Image, 2GB RAM note enough resources for current applications,	50	NA	Parts Costs/No image + Hardware failures + Cracked cases/inside
OEM N10L3-WX	SY1368000336	NA	No Regional Image, 2GB RAM note enough resources for current applications,	50	NA	Parts Costs/No image + Hardware failures + Cracked cases/inside
OEM N10L3-WX	SY1368000329	IMPL0211	No Regional Image, 2GB RAM note enough resources for current applications,	50	NA	Parts Costs/No image + Hardware failures + Cracked cases/inside
OEM N10L3-WX	SY1368000367	IMPL0210	No Regional Image, 2GB RAM note enough resources for current applications,	50	NA	Parts Costs/No image + Hardware failures + Cracked cases/inside
OEM N10L3-WX	SY1368000361	IMPL0207	No Regional Image, 2GB RAM note enough resources for current applications,	50	NA	Parts Costs/No image + Hardware failures + Cracked cases/inside
OEM N10L3-WX	SY1368000351	IMPL0203	No Regional Image, 2GB RAM note enough resources for current applications,	50	NA	Parts Costs/No image + Hardware failures + Cracked cases/inside
OEM N10L3-WX	SY1368000359	IMPL0214	No Regional Image, 2GB RAM note enough resources for current applications,	50	NA	Parts Costs/No image + Hardware failures + Cracked cases/inside
OEM N10L3-WX	SY1368000360	IMPL0213	No Regional Image, 2GB RAM note enough resources for current applications,	50	NA	Parts Costs/No image + Hardware failures + Cracked cases/inside
OEM N10L3-WX	SY1368000362	IMPL0208	No Regional Image, 2GB RAM note enough resources for current applications,	50	NA	Parts Costs/No image + Hardware failures + Cracked cases/inside
OEM N10L3-WX	SY1368000376	IMPL0202	No Regional Image, 2GB RAM note enough resources for current applications,	50	NA	Parts Costs/No image + Hardware failures + Cracked cases/inside
OEM N10L3-WX	SY1368000330	IMPL0205	No Regional Image, 2GB RAM note enough resources for current applications,	50	NA	Parts Costs/No image + Hardware failures + Cracked cases/inside
OEM N10L3-WX	SY1368000338	IMPL0176	No Regional Image, 2GB RAM note enough resources for current applications,	50	NA	Parts Costs/No image + Hardware failures + Cracked cases/inside

Make/Model	Serial Number	Asset Tag #	Notes	MSRP Today	Release Date	Reason for Recycling
OEM N10L3-WX	SY1368000326	IMPL0199	No Regional Image, 2GB RAM note enough resources for current applications,	50	NA	Parts Costs/No image + Hardware failures + Cracked cases/inside
OEM N10L3-WX	SY1368000328	IMPL0201	No Regional Image, 2GB RAM note enough resources for current applications,	50	NA	Parts Costs/No image + Hardware failures + Cracked cases/inside
OEM N10L3-WX	SY1368000373	IMPL0172	No Regional Image, 2GB RAM note enough resources for current applications,	50	NA	Parts Costs/No image + Hardware failures + Cracked cases/inside
OEM N10L3-WX	SY1368000374	IMPL0173	No Regional Image, 2GB RAM note enough resources for current applications,	50	NA	Parts Costs/No image + Hardware failures + Cracked cases/inside
OEM N10L3-WX	SY1368000369	IMPL0209	No Regional Image, 2GB RAM note enough resources for current applications,	50	NA	Parts Costs/No image + Hardware failures + Cracked cases/inside
OEM N10L3-WX	SY1368000358	NA	No Regional Image, 2GB RAM note enough resources for current applications,	50	NA	Parts Costs/No image + Hardware failures + Cracked cases/inside
OEM N10L3-WX	SY1368000368	NA	No Regional Image, 2GB RAM note enough resources for current applications,	50	NA	Parts Costs/No image + Hardware failures + Cracked cases/inside
OEM N10L3-WX	SY1368000380	IMPL0216	No Regional Image, 2GB RAM note enough resources for current applications,	50	NA	Parts Costs/No image + Hardware failures + Cracked cases/inside
OEM N10L3-WX	SY1368000366	IMPL0179	No Regional Image, 2GB RAM note enough resources for current applications,	50	NA	Parts Costs/No image + Hardware failures + Cracked cases/inside
OEM N10L3-WX	SY1368000378	IMPL0171	No Regional Image, 2GB RAM note enough resources for current applications,	50	NA	Parts Costs/No image + Hardware failures + Cracked cases/inside
OEM N10L3-WX	SY1368000375	IMPL0206	No Regional Image, 2GB RAM note enough resources for current applications,	50	NA	Parts Costs/No image + Hardware failures + Cracked cases/inside
OEM N10L3-WX	SY1368000354	IMPL0177	No Regional Image, 2GB RAM note enough resources for current applications,	50	NA	Parts Costs/No image + Hardware failures + Cracked cases/inside

Make/Model	Serial Number	Asset Tag #	Notes	MSRP Today	Release Date	Reason for Recycling
OEM N10L3-WX	SY1368000339	IMPL0170	No Regional Image, 2GB RAM note enough resources for current applications,	50	NA	Parts Costs/No image + Hardware failures + Cracked cases/inside
OEM N10L3-WX	SY1368000353	IMPL0198	No Regional Image, 2GB RAM note enough resources for current applications,	50	NA	Parts Costs/No image + Hardware failures + Cracked cases/inside
OEM N10L3-WX	SY1368000371	IMPL0169	No Regional Image, 2GB RAM note enough resources for current applications,	50	NA	Parts Costs/No image + Hardware failures + Cracked cases/inside
OEM N10L3-WX	SY1368000379	IMPL0178	No Regional Image, 2GB RAM note enough resources for current applications,	50	NA	Parts Costs/No image + Hardware failures + Cracked cases/inside
OEM N10L3-WX	SY1368000365	NA	No Regional Image, 2GB RAM note enough resources for current applications,	50	NA	Parts Costs/No image + Hardware failures + Cracked cases/inside
Lenovo Thinkpad E550	1s20DF0030USPF09231N	IMPL0452	Missing HDD/Battery/Damaged parts/Rattling inside	400	2015	Parts Costs/Hardware failures + Cracked cases/inside/ Phasing out
Lenovo Thinkpad E550	1s20DF0030USPF09T58Z	IMPL0283	Missing HDD/Battery/Damaged parts/Rattling inside	400	2015	Parts Costs/Hardware failures + Cracked cases/inside/ Phasing out
Lenovo Thinkpad E550	1s20EV002FUSPF0LHW2U	GEN0007	Missing HDD/Battery/Damaged parts/Rattling inside	400	2015	Parts Costs/Hardware failures + Cracked cases/inside/ Phasing out
Lenovo Thinkpad E550	1s20DF0030USPF08JEFG	1391	Missing HDD/Battery/Damaged parts/Rattling inside	400	2015	Parts Costs/Hardware failures + Cracked cases/inside/ Phasing out
Lenovo Thinkpad E550	1s20DF0030USPF0923XG	IMPL0291	Missing HDD/Battery/Damaged parts/Rattling inside	400	2015	Parts Costs/Hardware failures + Cracked cases/inside/ Phasing out
Lenovo Thinkpad E550	1s20DF0030USPF08JEAC	IMPL0256	Missing HDD/Battery/Damaged parts/Rattling inside	400	2015	Parts Costs/Hardware failures + Cracked cases/inside/ Phasing out
Lenovo Thinkpad E550	1s20DF0030USPF08J7J	IMPL0260	Missing HDD/Battery/Damaged parts/Rattling inside	400	2015	Parts Costs/Hardware failures + Cracked cases/inside/ Phasing out

Make/Model	Serial Number	Asset Tag#	Notes	MSRP Today	Release Date	Reason for Recycling
Lenovo Thinkpad E550	1s20DF0030USPF0ACREA	IMPL0319	Missing HDD/Battery/Damaged parts/Rattling inside	400	2015	Parts Costs/Hardware failures + Cracked cases/inside/ Phasing out
Lenovo Thinkpad E550	1s20DF0030USPF08JG9F	IMPL0286	Missing HDD/Battery/Damaged parts/Rattling inside	400	2015	Parts Costs/Hardware failures + Cracked cases/inside/ Phasing out
Lenovo Thinkpad E550	1s20DF0030USPF08JEEH	IMPL0596	Missing HDD/Battery/Damaged parts/Rattling inside	400	2015	Parts Costs/Hardware failures + Cracked cases/inside/ Phasing out
Lenovo Thinkpad E550	1s20DF0030USPF08JCLA	1075	Missing HDD/Battery/Damaged parts/Rattling inside	400	2015	Parts Costs/Hardware failures + Cracked cases/inside/ Phasing out
Lenovo Thinkpad E550	1s20DF0030USPF08JCN5	NA	Missing HDD/Battery/Damaged parts/Rattling inside	400	2015	Parts Costs/Hardware failures + Cracked cases/inside/ Phasing out
Lenovo Thinkpad E550	1s20DF0030USPF08JJC6	IMPL0460	Missing HDD/Battery/Damaged parts/Rattling inside	400	2015	Parts Costs/Hardware failures + Cracked cases/inside/ Phasing out
Lenovo Thinkpad E560	1s20EV002FUSPF0FPXTU	IMPL0472	Missing HDD/Battery/Damaged parts/Rattling inside	500	2016	Parts Costs/Hardware failures + Cracked cases/inside/ Phasing out
Lenovo Thinkpad E560	1s20EV002FUSPF0L6JW2	1318	Missing HDD/Battery/Damaged parts/Rattling inside	500	2016	Parts Costs/Hardware failures + Cracked cases/inside/ Phasing out
Lenovo Thinkpad E560	1s20EV002FUSPF0FPFNB	GEN0018	Missing HDD/Battery/Damaged parts/Rattling inside	500	2016	Parts Costs/Hardware failures + Cracked cases/inside/ Phasing out
Lenovo Thinkpad E560	1s20EV002FUSPF0KKHVO	IMPL0607	Missing HDD/Battery/Damaged parts/Rattling inside	500	2016	Parts Costs/Hardware failures + Cracked cases/inside/ Phasing out
Lenovo Thinkpad E540	1s20C6008SUSPF02E1NN	NA	Missing HDD/Battery/Damaged parts/Rattling inside	280	2014	Parts Costs/Hardware failures + Cracked cases/inside/ Phasing out
Lenovo Thinkpad E540	1s20C6008SUSPF02E3RJ	IMPL0436	Missing HDD/Battery/Damaged parts/Rattling inside	280	2014	Parts Costs/Hardware failures + Cracked cases/inside/ Phasing out

Make/Model	Serial Number	Asset Tag #	Notes	MSRP Today	Release Date	Reason for Recycling
Lenovo Thinkpad E540	1s20C6008SUSPF019MVW	IMPL0599	Missing HDD/Battery/Damaged parts/Rattling inside	280	2014	Parts Costs/Hardware failures + Cracked cases/inside/ Phasing out
Lenovo Thinkpad E540	1S68852BUPF082A9	IMPL0366	Missing HDD/Battery/Damaged parts/Rattling inside	280	2014	Parts Costs/Hardware failures + Cracked cases/inside/ Phasing out
Lenovo Thinkpad E540	1S325978UMP149ZE	IMPL0354	Missing HDD/Battery/Damaged parts/Rattling inside	280	2014	Parts Costs/Hardware failures + Cracked cases/inside/ Phasing out
Lenovo Thinkpad E540	1s20C6008SUSPF02E49K	IMPL0462	Missing HDD/Battery/Damaged parts/Rattling inside	280	2014	Parts Costs/Hardware failures + Cracked cases/inside/ Phasing out
Lenovo Thinkpad E540	1s20C6008SUSPF019NUH	IMPL0352	Missing HDD/Battery/Damaged parts/Rattling inside	280	2014	Parts Costs/Hardware failures + Cracked cases/inside/ Phasing out
Lenovo Thinkpad E540	1s20C6008SUSPF01DK0U	IMPL0531	Missing HDD/Battery/Damaged parts/Rattling inside	280	2014	Parts Costs/Hardware failures + Cracked cases/inside/ Phasing out
Lenovo Thinkpad E540	1s20C6008SUSPF02E44H	IMPL0437	Missing HDD/Battery/Damaged parts/Rattling inside	280	2014	Parts Costs/Hardware failures + Cracked cases/inside/ Phasing out
Lenovo Thinkpad E540	1S68852BUPF083BX	1340	Missing HDD/Battery/Damaged parts/Rattling inside	280	2014	Parts Costs/Hardware failures + Cracked cases/inside/ Phasing out
Lenovo Thinkpad E540	1S68852BUPF0CMRL	IMPL0358	Missing HDD/Battery/Damaged parts/Rattling inside	280	2014	Parts Costs/Hardware failures + Cracked cases/inside/ Phasing out
Lenovo Thinkpad E540	1s20C6008SUSPF02E42C	IMPL0360	Missing HDD/Battery/Damaged parts/Rattling inside	280	2014	Parts Costs/Hardware failures + Cracked cases/inside/ Phasing out
Lenovo Thinkpad E540	1S68852BUPF0C4YH	1328	Missing HDD/Battery/Damaged parts/Rattling inside	280	2014	Parts Costs/Hardware failures + Cracked cases/inside/ Phasing out
Lenovo Thinkpad E540	1s20C6008SUSPF02E3IE	1086	Missing HDD/Battery/Damaged parts/Rattling inside	280	2014	Parts Costs/Hardware failures + Cracked cases/inside/ Phasing out

Make/Model	Serial Number	Asset Tag#	Notes	MSRP Today	Release Date	Reason for Recycling
Lenovo Thinkpad E540	1568852BUPFOCP9X	1084	Missing HDD/Battery/Damaged parts/Rattling inside	280	2014	Parts Costs/Hardware failures + Cracked cases/inside/ Phasing out
Lenovo Thinkpad E540	1568852BUPFOC5CB	IMPL0588	Missing HDD/Battery/Damaged parts/Rattling inside	280	2014	Parts Costs/Hardware failures + Cracked cases/inside/ Phasing out
Lenovo Thinkpad E540	1568852BUPFOCMIM7	IMPL0355	Missing HDD/Battery/Damaged parts/Rattling inside	280	2014	Parts Costs/Hardware failures + Cracked cases/inside/ Phasing out
Lenovo Thinkpad E540	1568852BUPFOB2A2	NA	Missing HDD/Battery/Damaged parts/Rattling inside	280	2014	Parts Costs/Hardware failures + Cracked cases/inside/ Phasing out
Lenovo Thinkpad E540	1568852BUPFOB2YZ	IMPL0362	Missing HDD/Battery/Damaged parts/Rattling inside	280	2014	Parts Costs/Hardware failures + Cracked cases/inside/ Phasing out
Lenovo Thinkpad E530	15325978UIMP10127	PLAN0059	Missing HDD/Battery/Damaged parts/Rattling inside	120	2013	Parts Costs/Hardware failures + Cracked cases/inside/ Phasing out
Lenovo Thinkpad E530	15325978UIMP1013Y	WALT0169	Missing HDD/Battery/Damaged parts/Rattling inside	120	2013	Parts Costs/Hardware failures + Cracked cases/inside/ Phasing out
Lenovo Thinkpad E530	15325978UIMP100L0	GEN0241	Missing HDD/Battery/Damaged parts/Rattling inside	120	2013	Parts Costs/Hardware failures + Cracked cases/inside/ Phasing out
Lenovo Thinkpad T440p	1S20AN0069USPB02MA8K	NA	BAD HDD & RAM	200	2012	Parts Costs/Hardware failures + Cracked cases/inside/ Phasing out
Lenono SL500	1S274673UL3AVW9K	IMPL0006	No image/phased out/Not enough resources for current applications	50	2009	Parts will cost to much and no image, Cant tell what else is broken as well
Lenovo Thinkpad E550	1S20DF0030USPF08JECE	IMPL0314	Missing HDD/Battery/Damaged parts/Rattling inside	400	2015	Parts Costs/Hardware failures + Cracked cases/inside/ Phasing out
Lenovo Thinkpad E550	1S20DF0030USPF09T1DB	IMPL0299	Missing HDD/Battery/Damaged parts/Rattling inside	400	2015	Parts Costs/Hardware failures + Cracked cases/inside/ Phasing out

Make/Model	Serial Number	Asset Tag #	Notes	MSRP Today	Release Date	Reason for Recycling
Lenovo Thinkpad E550	1s20EV002FUSPF0NEHTE	IMPL0601	Missing HDD/Battery/Damaged parts/Rattling inside	400	2015	Parts Costs/Hardware failures + Cracked cases/inside/ Phasing out
Lenovo Thinkpad E550	1s20DF0030USPF08JCAV	IMPL0257	Missing HDD/Battery/Damaged parts/Rattling inside	400	2015	Parts Costs/Hardware failures + Cracked cases/inside/ Phasing out
Lenovo Thinkpad E560	1s20DF0030USPF08JJC	IMPL0268	Missing HDD/Battery/Damaged parts/Rattling inside	500	2016	Parts Costs/Hardware failures + Cracked cases/inside/ Phasing out
Lenovo Thinkpad E560	1s20EV002FUSPF0L9HLS	GEN0011	Missing HDD/Battery/Damaged parts/Rattling inside	500	2016	Parts Costs/Hardware failures + Cracked cases/inside/ Phasing out
Lenovo Thinkpad E550	1s20DF0030USPF08JGCV	IMPL0278	Missing HDD/Battery/Damaged parts/Rattling inside	400	2015	Parts Costs/Hardware failures + Cracked cases/inside/ Phasing out
Lenovo Thinkpad E550	1s20EV002FUSPF0LC5YU	1341	Missing HDD/Battery/Damaged parts/Rattling inside	400	2015	Parts Costs/Hardware failures + Cracked cases/inside/ Phasing out
Lenovo Thinkpad E540	1s20C6008SUSPF02E1P1	1305	Missing HDD/Battery/Damaged parts/Rattling inside	280	2014	Parts Costs/Hardware failures + Cracked cases/inside/ Phasing out
Lenovo Thinkpad E530	1S325978UMP1010D	PLAN0056	Missing HDD/Battery/Damaged parts/Rattling inside	120	2013	Parts Costs/Hardware failures + Cracked cases/inside/ Phasing out
Lenovo Thinkpad E530	1S68852BUPF0B2WE	1399	Missing HDD/Battery/Damaged parts/Rattling inside	120	2013	Parts Costs/Hardware failures + Cracked cases/inside/ Phasing out
Lenovo Thinkpad E530	1S68852BUPF0B34V	1327	Missing HDD/Battery/Damaged parts/Rattling inside	120	2013	Parts Costs/Hardware failures + Cracked cases/inside/ Phasing out
Lenovo Thinkpad E530	1S325978UMP100LH	PLAN0055	Missing HDD/Battery/Damaged parts/Rattling inside	120	2013	Parts Costs/Hardware failures + Cracked cases/inside/ Phasing out
Lenovo Thinkpad T430	1S23426QUPBW1L7V	NA	BAD Display & HDD	250	2011	Parts replacement cost more then computer and phased out, no image

Make/Model	Serial Number	Asset Tag#	Notes	MSRP Today	Release Date	Reason for Recycling
Lenovo Thinkpad E540	1520C6008SUSPF019W3V	NA	Missing HDD/Battery/Damaged parts/Rattling inside	280	2014	Parts Costs/Hardware failures + Cracked cases/inside/ Phasing out
Lenovo Thinkpad E531	1568852BUPF0CP97	IMPL0587	Missing HDD/Battery/Damaged parts/Rattling inside	120	2013	Parts Costs/Hardware failures + Cracked cases/inside/ Phasing out
Lenovo Thinkpad E531	1568852BUPF0B3GW	IMPL0434	Missing HDD/Battery/Damaged parts/Rattling inside	120	2013	Parts Costs/Hardware failures + Cracked cases/inside/ Phasing out
Lenovo Thinkpad E531	1568852BUPF0C39T	IMPL0361	Missing HDD/Battery/Damaged parts/Rattling inside	120	2013	Parts Costs/Hardware failures + Cracked cases/inside/ Phasing out
Lenovo Thinkpad E531	1568852BUPF0CMWR	1383	Missing HDD/Battery/Damaged parts/Rattling inside	120	2013	Parts Costs/Hardware failures + Cracked cases/inside/ Phasing out
Lenovo Thinkpad E531	1568852BUPF0CMNK	IMPL0357	Missing HDD/Battery/Damaged parts/Rattling inside	120	2013	Parts Costs/Hardware failures + Cracked cases/inside/ Phasing out
Lenovo SL500	15274673UL3AVW9F	IMPL0050	No Regional Image, discontinued	NA	2009	Phased out/discontinued
Lenovo SL500	15274673UL3AVW9R	1269	No Regional Image, discontinued	NA	2009	Phased out/discontinued
Lenovo SL500	152746M1JMLTEM08	NA	No Regional Image, discontinued	NA	2009	Phased out/discontinued
Lenovo SL500	15274673UL3AVX0C	IMPL0027	No Regional Image, discontinued	NA	2009	Phased out/discontinued
Lenovo SL500	15274673UL3AVW7B	IMPL0008	No Regional Image, discontinued	NA	2009	Phased out/discontinued
Lenovo Thinkpad T430	1523426FUPB53H2E	IMPL0395	BAD HDD	250	2011	Parts replacement cost more then computer and phased out, no image, Different docks
Lenovo Thinkpad T430	1523426QUPBK48X3	NA	Phased out	250	2011	Phased out
Lenovo Thinkpad T430	1523426FUPB0N3BD	1258	Phased Out	250	2011	Phased out
Lenovo Thinkpad T430	152516ADUR80P5N7	PLAN0239	Phased Out	250	2011	Phased out
Lenovo Thinkpad E531	1568852BUPF0B22H	IMPL0367	Missing HDD/Battery/Damaged parts/Rattling inside	120	2013	Parts Costs/Hardware failures + Cracked cases/inside/ Phasing out

Make/Model	Serial Number	Asset Tag #	Notes	MSRP Today	Release Date	Reason for Recycling
Lenovo Thinkpad E531	1568852BUPF0C5GD	IMPL0903	Missing HDD/Battery/Damaged parts/Rattling inside	120	2013	Parts Costs/Hardware failures + Cracked cases/inside/ Phasing out
Lenovo Thinkpad T410	152516ADUR84FN3H	NA	Phased Out	60	2010	Phased out
Lenovo Thinkpad T440p	1520AN0069USPB02WSOP	IT1511053	K12 Owned	NA	NA	NA
HP Pavilion DV7	CNF1083FBC	NA	No image/phased out/Not enough resources for current applications	NA	NA	NA
HP	CND6368N2V	NA	No image/phased out/Not enough resources for current applications	NA	NA	NA
HP	CND5204V2L	NA	No image/phased out/Not enough resources for current applications	NA	NA	NA
HP	CND5010CS0	NA	No image/phased out/Not enough resources for current applications	NA	NA	NA
Lenovo SL500	15274673UL3AVW8G	IMPL0049	BAD HDD/ No Regional Image/ No docking station port	NA	2009	Phased out
Lenovo SL500	152746MJUMLTEM01	NA	BAD HDD/ No Regional Image/ No docking station port	NA	2009	Phased out
Lenovo SL500	15274673UL3AVX0W	IMPL0014	BAD HDD/ No Regional Image/ No docking station port	NA	2009	Phased out
Lenovo SL500	152746MJUMLTEM20	NA	BAD HDD/ No Regional Image/ No docking station port	NA	2009	Phased out
Lenovo SL500	15274673UL3AVW8W	IMPL0044	BAD HDD/ No Regional Image/ No docking station port	NA	2009	Phased out
Lenovo SL500	15274673UL3AVW8K	IMPL0011	BAD HDD/ No Regional Image/ No docking station port	NA	2009	Phased out
Lenovo SL500	15274673UL3AVW9T	IMPL0059	BAD HDD/ No Regional Image/ No docking station port	NA	2009	Phased out
Lenovo SL500	152746MJUMLCNP64	NA	BAD HDD/ No Regional Image/ No docking station port	NA	2009	Phased out
Lenovo SL500	152746MJUMLTEM00	NA	BAD HDD/ No Regional Image/ No docking station port	NA	2009	Phased out
Lenovo SL500	1527469MUMILKDD00	NA	BAD HDD/ No Regional Image/ No docking station port	NA	2009	Phased out

Make/Model	Serial Number	Asset Tag #	Notes	MSRP Today	Release Date	Reason for Recycling
Lenovo SL500	1S274673UL3AVX0M	IMPL0025	BAD HDD/ No Regional Image/ No docking station port	NA	2009	Phased out
Lenovo SL500	1S2746MJUMLT84	NA	BAD HDD/ No Regional Image/ No docking station port	NA	2009	Phased out
Lenovo SL500	1S274673UL3AVX1H	IMPL0057	BAD HDD/ No Regional Image/ No docking station port	NA	2009	Phased out
Lenovo SL500	1S274673UL3AVW9N	IMPL0041	BAD HDD/ No Regional Image/ No docking station port	NA	2009	Phased out
Lenovo Thinkcenter M9965	1S9965A2UMJ09593	PLAN0024	Phased out	NA	NA	Phased out
Lenovo Thinkcenter M9965	11S45K6239ZVJ56TA1S086	1101	Phased out	NA	NA	Phased out
Lenovo Thinkcenter M9965	11S45K6239ZVJ56TA3E20Y	IMPL0138	Phased out	NA	NA	Phased out
Lenovo Thinkcenter M9968	11S45K6239ZVJ56TA3E237	IMPL0136	Phased out	NA	NA	Phased out
Lenovo Thinkcenter 7515	1S7515K6UMJGR485	1104	Phased out	NA	NA	Phased out
Lenovo Thinkcenter 8611	1S8811VAVLKWKRK0	1103	Phased out	NA	NA	Phased out
Lenovo Thinkcenter 8612	1S8811VAVLKWKRG6	1196	Phased out	NA	NA	Phased out
Lenovo Thinkcenter 8613	1S8811VAVLKWKRL2	1102	Phased out	NA	NA	Phased out
Lenovo Thinkcenter 8614	1S8811VAVLKWKRH4	PLAN0044	Phased out	NA	NA	Phased out
Lenovo Thinkcenter M9965	1S9965A2UMJ09596	PLAN0026	Phased out	NA	NA	Phased out
Lenovo Thinkcenter M9965	1S9965A2UMJ09597	IMPL0373	Phased out	NA	NA	Phased out
Lenovo Thinkcenter M9965	1S9965A2UMJ09595	IMPL0372	Phased out	NA	NA	Phased out
Lenovo Thinkcenter M9965	1S9965A6UMJAMYB4	NA	Phased out	NA	NA	Phased out
Lenovo Thinkcenter M9965	1S9965A6UMJAMYB8	NA	Phased out	NA	NA	Phased out

Make/Model	Serial Number	Asset Tag #	Notes	MSRP Today	Release Date	Reason for Recycling
Lenovo Thinkcenter M9965	1S9965A6UMJTKY17	NA	Phased out	NA	NA	Phased out
Lenovo Thinkcenter M9965	1S9965A6UMJEAH22	IMPL0411	Phased out	NA	NA	Phased out
Lenovo Thinkcenter M9965	1S9965A6UMJCPN55	IMPL0412	Phased out	NA	NA	Phased out
Lenovo Thinkcenter M9966	1S9965A6UMJAMYB5	PLAN0209	Phased out	NA	NA	Phased out
HP Compaq 6004	2UA02929V1	NA	Phased out	NA	NA	Phased out
HP Compaq 6005	MXL0321SVX	NA	Phased out	NA	NA	Phased out
HP Compaq 6006	2UA3281D1Q	NA	Phased out	NA	NA	Phased out
HP Compaq 6006	2UA136089W	NA	Phased out	NA	NA	Phased out
Dell DCSLF	JVQSGG1	NA	Phased out	NA	NA	Phased out
Sony VIO PCG-61A12L	64D4DA508288	IMPL0350	Phased out	NA	NA	BAD HDD
Sony VIO PCG-61A12L	64D4DA51917E	PLAN0161	Phased out	NA	NA	BAD HDD
Sony VIO PCG-61A12L	64D4DA5278E7	IMPL0351	Phased out	NA	NA	BAD HDD

HOOSIER ACADEMY, INC.

**Resolution Approving
Designation of Lynn Black Elementary and Middle School Building**

Resolution No. 2019 – 6

WHEREAS, the Board of Directors of Hoosier Academy, Inc. (the “Corporation”) previously resolved to modify the grade levels offered at the Corporation’s Hybrid School, Hoosier Academy – Indianapolis, such that the Hybrid School will enroll students in kindergarten through 8th grade; and

WHEREAS, Hoosier Academy – Indianapolis currently operates its Middle School in facilities located at 2855 N. Franklin Road, Indianapolis, Indiana; and

WHEREAS, the Corporation’s Lease for such facilities is scheduled to end effective June 30, 2019, and the Corporation is scheduled to vacate that premises at that time; and

WHEREAS, the Corporation also leases facilities located at 5640 Caito Drive, Indianapolis, Indiana (the “Caito Drive Facility”), where Hoosier Academy – Indianapolis currently operates the Lynn Black Elementary School; and


WHEREAS, the Board of Directors now desires to approve the relocation of the aforementioned Middle School to the Caito Drive Facility and to designate such school building as the Lynn Black Elementary and Middle School.

IT IS, THEREFORE, RESOLVED that the Board of Directors hereby approves relocation of the aforementioned Middle School to the Caito Drive Facility and the designation of such school building as the Lynn Black Elementary and Middle School.

Voice Vote:

Ayes: 5 No: 0

Date: _____

Certification of Board Secretary: 

HOOSIER ACADEMY, INC.

RESOLUTION AUTHORIZING LEASE AMENDMENT

RESOLUTION NO. 2019 – 7

WHEREAS, Hoosier Academy, Inc. (the “Corporation”) currently leases facilities located at 2855 N. Franklin Road, Indianapolis, Indiana, for the high school and middle school grades for Hoosier Academy – Indianapolis (“Hoosier”) and for its school administrative offices for both Hoosier and the Insight School of Indiana (“ISIN”); and

WHEREAS, such lease is scheduled to end effective June 30, 2019, and the Corporation is scheduled to vacate that premises at that time; and

WHEREAS, the Corporation currently leases facilities at 5640 Caito Drive, Indianapolis, Indiana, identified as Building Number One (1) (“Building 1”), and is desirous of expanding its current space to include the lease of an additional building at the Caito Drive location, identified as Building Number Two (2) (“Building 2”), for use as administrative offices for all Hoosier and ISIN operations; and

WHEREAS, the Corporation was presented with a Sixth Amendment to Lease Agreement in the form attached hereto as Exhibit A (“Lease Amendment”), which provides for an increase in the Corporation’s leased premises by adding Building 2, having first floor space of 4,500 square feet and basement space of 4,500 square feet, at an annualized rental amount of \$36,000, and a monthly rental amount of \$3,000, commencing on September 1, 2019, with a term ending August 31, 2021; and

WHEREAS, under the terms of the Lease Amendment, the Corporation will have full occupancy of Building 2 on July 1, 2019, at a rental rate of \$2000 per month from the date of occupancy until August 31, 2019; and

WHEREAS, under the terms of the Lease Amendment, the Corporation will have access to Building 2 on or after May 10, 2019, for telecommunications, networking and technology installation work, and on June 17, 2019, to move in equipment, furnishings, furniture and supplies, at a rental rate of -0- per month for the period of partial occupancy from May 10, 2019, through June 30, 2019; and

WHEREAS, the Lease Amendment will extend the term of the Lease on Building 1 by a period of two (2) years, to commence as of September 1, 2019, and expire on August 31, 2021, at an annual rental rate of \$158,800, payable in monthly installments of \$13,233; and

WHEREAS, the Board deems it in the interest of the Corporation to acquire the additional space at the Caito Road location Building 2 for the additional rent payable under the terms provided in the Lease Amendment and to extend the term of the Building 1 Lease on the terms provided in the Lease Amendment.

IT IS, THEREFORE, RESOLVED that the Lease Amendment attached hereto as Exhibit A be, and hereby is, ratified, approved and confirmed, and the Head of Schools and the President be, and each hereby are, authorized to take any and all steps necessary or desirable to carry out the terms and conditions thereof.

Voice Vote:

Ayes: _____ No: _____

Date: _____

Certification of Board Secretary: _____

EXHIBIT A
LEASE AMENDMENT

SIXTH AMENDMENT TO LEASE AGREEMENT

THIS SIXTH AMENDMENT TO LEASE AGREEMENT ("Sixth Amendment") is made and entered into this _____ day of April, 2019, between Douglas Realty Group Noblesville I, LLC (hereinafter called "Landlord"), an Indiana limited liability company, and Hoosier Academy, Inc., an Indiana public charter school (hereinafter called "Tenant").

RECITALS

WHEREAS, Tenant entered into a Lease with Patriots Place, LLC, an Indiana limited liability company, dated August 4, 2008, for the Leased Premises covering premises at 5640 Caito Drive, Suite 100, Indianapolis, Indiana, containing 11,200 rentable square feet and consisting of the entirety of Building Number One ("Building 1"), along with an outdoor area for a playground located between building 1 and Building 2;

WHEREAS, the Tenant and Patriots Place, LLC entered into the First Amendment to Lease Agreement dated October 6, 2009, but effective as of May 1, 2009 ("First Amendment"), to resolve Patriots Place's breach of its obligation to pay Tenant the Tenant Finish Allowance;

WHEREAS, the Lease was subsequently assigned from Patriots Place, LLC to Indy Property Holdings, LLC and, thereafter, Indy Property Holdings, LLC subsequently assigned all of its rights, title, and interest in the Leased Premises and the Lease to Landlord pursuant to, among other documentation, an Assignment of Leases agreement by and between Indy Property Holdings, LLC and Landlord, dated October 31, 2011;

WHEREAS, Landlord and Tenant entered into the Second Amendment to Lease Agreement dated June 25, 2013 ("Second Amendment"), whereby the Lease Term was extended for an additional period commencing on September 1, 2013, and expiring on August 31, 2016, with Basic Rent for such period to be \$170,800.00 per year of the Term, payable in twelve equal installments of \$14,233.33 on the first day of each calendar month;

WHEREAS, Landlord and Tenant entered into the Third Amendment to Lease Agreement dated March 30, 2016 ("Third Amendment"), whereby the Lease Term was extended for an additional period commencing on September 1, 2016, and expiring on August 31, 2017;

WHEREAS, Landlord and Tenant entered into the Fourth Amendment to Lease Agreement dated December 20, 2016 ("Fourth Amendment"), whereby the Lease Term was further extended for an additional period commencing on September 1, 2017, and expiring on August 31, 2018;

WHEREAS, Landlord and Tenant entered into the Fifth Amendment to Lease Agreement dated February 27, 2018 ("Fifth Amendment"), whereby the Lease Term was further extended for an additional period commencing on September 1, 2018, and expiring on August

31, 2019, and the annual Basic Rent for the Leased Premises was reduced to \$158,800, payable in twelve (12) equal installments of \$13,233.33 on the first day of each calendar month;

WHEREAS, the Term of the Lease, as amended by the Fifth Amendment, expires August 31, 2019, and the parties desire to further amend and extend the Lease Term and to expand the Leased Premises to add Building Number Two ("Building 2"), located at 5650 Caito Drive, Indianapolis, Indiana in the Project, consisting of 4,500 rentable square feet of first floor space as shown on Lease Exhibit A-2 and 4,500 rentable square feet of "Basement Area" as shown on Lease Exhibit A-3, all upon the terms and conditions more particularly set forth herein.

NOW THEREFORE, Subject to and upon the terms, provisions and conditions hereinafter set forth, and each in consideration of the duties, covenants and obligations of the other hereunder, the parties agree to modify and amend the Lease as follows:

1. Incorporation of Recitals and Defined Terms. The foregoing recitals are hereby incorporated into this Sixth Amendment and made a part hereof as though set forth herein verbatim. Any term used herein which is not specifically defined herein shall have the meaning ascribed thereto in the Lease.
2. Addition of Building 2. The Leased Premises is expanded to include Building 2 resulting in the Leased Premises being comprised of Building 1, Building 2 and the Playground Area located between Building 1 and Building 2. Reference to the Building in the Lease shall include both Building 1 and Building 2.
3. Occupancy Date for Building 2. Tenant will take full occupancy of Building 2 by July 1, 2019, and the Rental rate for Building 2 from the date of occupancy until August 31, 2019 shall be \$2000 per month. Tenant will have access to Building 2 on or after May 10, 2019 for telecommunications, networking and technology installation related work, and on June 17, 2019 Tenant will have access to Building 2 to commence the move in of its equipment, furnishings, furniture and supplies. The Rental rate for the period of such partial occupancy commencing May 10, 2019 to the date of a full occupancy on July 1, 2019 shall be -0- per month.
4. Extension of Term. The Term of the Lease is hereby further extended beyond the period stated in the Fifth Amendment by a period of two (2) years, to commence as of September 1, 2019 and expire on August 31, 2021.
5. Basic Rent for Building 1 and Playground Area During Extended Term. The annual Basic Rent for Building 1 and Playground Area for the extended Term set forth in Section 4 of this Sixth Amendment shall be \$158,800 per year of the Term, payable in twelve (12) equal installments of \$13,233.33 on the first day of each calendar month.
6. Rental for Building 2 During Extended Term. The annual Rental (as defined in Section 5.01 of the Lease) for Building 2 for the extended Term shall be \$36,000 per year of the Term payable in twelve (12) equal installments of \$3,000 on the first day of each calendar month, which annual Rental is inclusive of any of Tenant's Proportionate Share of Excess

Operating Cost and Impositions (as those terms are defined in the Lease). For clarity, the annual Rental of \$36,000 payable by Tenant for Building 2 includes Basic Rent and any and all amounts of Tenant's Proportionate Share of Excess Operating Cost and Impositions that otherwise may or would be allocated to Building 2, and no separate or additional amounts for Tenant's Proportionate Share of Excess Operating Cost and Impositions shall be due or payable by Tenant for Building 2.

7. Preparation of Leased Premises. Landlord at its cost and expense agrees to complete the work required for updating and preparation of Building 1 and Building 2 of the Leased Premises as described and identified on Exhibit A attached hereto and made a part hereof ("Landlord Finish Improvements") provided, however, that the Landlord's obligation to pay for Landlord Finish Improvements shall not exceed one hundred twenty-five thousand dollars (\$125,000). Landlord will cause its contractors and subcontractors to perform the Landlord Finish Improvements: (A) in accordance with plans and specifications agreed upon by Tenant and in accordance with any necessary Permits, and (B) in a good and workman like manner and in accordance with all applicable Laws. To the extent the good faith commercially reasonable estimates for the Landlord Finish Improvements obtained by Landlord exceed \$125,000, Landlord and Tenant shall exercise commercially reasonable efforts to work together to prioritize and limit the Landlord Finish Improvements to keep them within that expense limit, or Tenant may elect to pay for that amount of Landlord Finish Improvements that exceed \$125,000. Landlord will commence the Landlord Finish Improvements for Building 1 on or prior to June 1, 2019 and will complete the Landlord Finish Improvements for Building 1 on or prior to August 1, 2019. Landlord will commence the Landlord Finish Improvements for Building 2 on or prior to May 10, 2019 and will complete the Landlord Finish Improvements for Building 2 on or prior to June 17, 2019.

8. Signage for Building 2. Tenant shall have the right at Tenant's sole cost and expense to install an identification sign on the south elevation of Building 2 and/or on the entry door to Building 2. The exact specifications and location of signage for Building 2 shall be subject to the approval of Landlord, which shall not unreasonably conditioned, withheld or delayed, provided that the sign is consistent with (i) the Sign Regulations of Marion County, Indiana and (ii) the Project's sign criteria and aesthetics of the project.

9. Parking for Building 2. Tenant shall be entitled, on a non-exclusive basis and without additional charge, to use the parking spaces in front of Building 2.

10. Deletion of Article XX of Lease. Article XX – Expansion is hereby deleted from the Lease.

11. Controlling Terms. In the event of any conflict between the terms and provisions of this Sixth Amendment and the terms and the provisions of the Lease, First Amendment, Second Amendment, Third Amendment, Fourth Amendment or the Fifth Amendment, the terms and provisions of this Sixth Amendment shall prevail.

12. Ratification of Lease and Previous Amendments Thereto. Except as otherwise modified or amended by this Sixth Amendment, all other terms and provisions of the Lease, as

amended by the First Amendment, Second Amendment, Third Amendment, Fourth Amendment and the Fifth Amendment, shall remain unmodified, unamended, and in full force and effect. In the Lease, or any instrument, document or other consideration executed or delivered in connection therewith, any reference to the "Lease," shall be deemed and construed to be a reference to the Lease as amended hereby and as amended by the First Amendment, Second Amendment, Third Amendment, Fourth Amendment and Fifth Amendment.

13. Good Faith Negotiations. Landlord Acknowledges Tenant's status as a charter school. Due to the nature of Tenant's charter school status, its charter term, and charter renewal requirements, Landlord covenants that if Tenant's charter is revoked or if funding is materially reduced, Landlord agrees to, in good faith, work with Tenant to renegotiate this Lease or those portions of the Lease impacted by a change in status or funding so that the terms are mutually beneficial to both parties. If Tenant's charter is renewed for an additional charter term beyond the extended Term of the term of the Lease, Landlord and Tenant agree to exercise commercially reasonable efforts to negotiate for an additional extension of the Lease Term or for a new Lease on terms mutually beneficial to both parties.

14. Execution Authority. The individuals signing this Sixth Amendment on behalf of Landlord and Tenant represent and warrant that he or she has the full power and authority to execute this Sixth Amendment and that upon such execution Landlord and Tenant shall be fully bound by each and every provision of the Lease, as amended by this Sixth Amendment.

15. Counterparts; Facsimile. This Sixth Amendment may be executed in any number of identical counterparts, all of which when taken together, shall constitute the same instrument. An executed facsimile copy or emailed copy of this Sixth Amendment shall be deemed an original for all relevant purposes so long as the send party can provide proof of such proper delivery.

IN WITNESS WHEREOF, the parties have duly executed this Sixth Amendment the day and year first written above.

LANDLORD

Douglas Realty Group Noblesville I, LLC

By: _____

PRINTED: _____

ITS: _____

TENANT

Hoosier Academy, Inc.
An Indiana Public Charter School

By: John Marske

PRINTED: John Marske

ITS: Board chair

EXHIBIT A

LANDLORD FINISH IMPROVEMENTS

Building 2

1. Repair and paint exterior wood on south face of building (including removal of the nailed board and conform, repair and paint as need to fix aesthetics)
2. Replace carpet throughout first floor and basement (to be selected by tenant)
3. On main floor level, paint any wall areas that are not currently covered with wall paper (light beige to coordinate with wallcovering color)
4. Repaint basement area to a light grey (to be selected by Tenant)
5. Repair failing cracking cement sidewalk/entry at the exterior entrance
6. Repair asphalt in parking lot and access drive in front of building
7. Obtain quotes for cubical walls for 6 offices (tenant will acquire at its expense)(consider used or pre-owned equipment)

Building 1

1. Repair any drywall as necessary throughout Premises and paint all interior of Premises to a light grey (to be selected by Tenant)
2. Re-tarp and mulch playground
3. Repair and replace base trim throughout space. In atrium (reception) area replace wood base trim so all trim in that area is consistent in size and style.
4. Replace water-damaged ceiling tiles and any other damaged or discolored ceiling tiles
5. Replace window blinds in glass atrium and classrooms
6. Provide overall deep cleaning (floors, walls, windows) of Premises
7. Repair hole in fence on the playground
8. Add a gate to the playground fence to connect the two buildings
9. Add cement walkway from the back stairs exit to the front sidewalk and to the gate entry that is being added
10. Repair asphalt in parking lot and access drive in front of building
11. Repair failing or cracking cement sidewalk fronting building

SIXTH AMENDMENT TO LEASE AGREEMENT

THIS SIXTH AMENDMENT TO LEASE AGREEMENT ("Sixth Amendment") is made and entered into this 14th day of May, 2019, between Douglas Realty Group Noblesville I, LLC (hereinafter called "Landlord"), an Indiana limited liability company, and Hoosier Academy, Inc., an Indiana public charter school (hereinafter called "Tenant").

RECITALS

WHEREAS, Tenant entered into a Lease with Patriots Place, LLC, an Indiana limited liability company, dated August 4, 2008, for the Leased Premises covering premises at 5640 Caito Drive, Suite 100, Indianapolis, Indiana, containing 11,200 rentable square feet and consisting of the entirety of Building Number One ("Building 1"), along with an outdoor area for a playground located between building 1 and Building 2;

WHEREAS, the Tenant and Patriots Place, LLC entered into the First Amendment to Lease Agreement dated October 6, 2009, but effective as of May 1, 2009 ("First Amendment"), to resolve Patriots Place's breach of its obligation to pay Tenant the Tenant Finish Allowance;

WHEREAS, the Lease was subsequently assigned from Patriots Place, LLC to Indy Property Holdings, LLC and, thereafter, Indy Property Holdings, LLC subsequently assigned all of its rights, title, and interest in the Leased Premises and the Lease to Landlord pursuant to, among other documentation, an Assignment of Leases agreement by and between Indy Property Holdings, LLC and Landlord, dated October 31, 2011;

WHEREAS, Landlord and Tenant entered into the Second Amendment to Lease Agreement dated June 25, 2013 ("Second Amendment"), whereby the Lease Term was extended for an additional period commencing on September 1, 2013, and expiring on August 31, 2016, with Basic Rent for such period to be \$170,800.00 per year of the Term, payable in twelve equal installments of \$14,233.33 on the first day of each calendar month;

WHEREAS, Landlord and Tenant entered into the Third Amendment to Lease Agreement dated March 30, 2016 ("Third Amendment"), whereby the Lease Term was extended for an additional period commencing on September 1, 2016, and expiring on August 31, 2017;

WHEREAS, Landlord and Tenant entered into the Fourth Amendment to Lease Agreement dated December 20, 2016 ("Fourth Amendment"), whereby the Lease Term was further extended for an additional period commencing on September 1, 2017, and expiring on August 31, 2018;

WHEREAS, Landlord and Tenant entered into the Fifth Amendment to Lease Agreement dated February 27, 2018 ("Fifth Amendment"), whereby the Lease Term was further extended for an additional period commencing on September 1, 2018, and expiring on August

31, 2019, and the annual Basic Rent for the Leased Premises was reduced to \$158,800, payable in twelve (12) equal installments of \$13,233.33 on the first day of each calendar month;

WHEREAS, the Term of the Lease, as amended by the Fifth Amendment, expires August 31, 2019, and the parties desire to further amend and extend the Lease Term and to expand the Leased Premises to add Building Number Two ("Building 2"), located at 5650 Caito Drive, Indianapolis, Indiana in the Project, consisting of 4,500 rentable square feet of first floor space as shown on Lease Exhibit A-2 and 4,500 rentable square feet of "Basement Area" as shown on Lease Exhibit A-3, all upon the terms and conditions more particularly set forth herein.

NOW THEREFORE, Subject to and upon the terms, provisions and conditions hereinafter set forth, and each in consideration of the duties, covenants and obligations of the other hereunder, the parties agree to modify and amend the Lease as follows:

1. Incorporation of Recitals and Defined Terms. The foregoing recitals are hereby incorporated into this Sixth Amendment and made a part hereof as though set forth herein verbatim. Any term used herein which is not specifically defined herein shall have the meaning ascribed thereto in the Lease.

2. Addition of Building 2. The Leased Premises is expanded to include Building 2 resulting in the Leased Premises being comprised of Building 1, Building 2 and the Playground Area located between Building 1 and Building 2. Reference to the Building in the Lease shall include both Building 1 and Building 2.

3. Occupancy Date for Building 2. Tenant will take full occupancy of Building 2 by July 1, 2019, and the Rental rate for Building 2 from the date of occupancy until August 31, 2019 shall be \$2000 per month. Tenant will have access to Building 2 on or after May 10, 2019 for telecommunications, networking and technology installation related work, and on June 17, 2019 Tenant will have access to Building 2 to commence the move in of its equipment, furnishings, furniture and supplies. The Rental rate for the period of such partial occupancy commencing May 10, 2019 to the date of a full occupancy on July 1, 2019 shall be -0- per month.

4. Extension of Term. The Term of the Lease is hereby further extended beyond the period stated in the Fifth Amendment by a period of two (2) years, to commence as of September 1, 2019 and expire on August 31, 2021.

5. Basic Rent for Building 1 and Playground Area During Extended Term. The annual Basic Rent for Building 1 and Playground Area for the extended Term set forth in Section 4 of this Sixth Amendment shall be \$158,800 per year of the Term, payable in twelve (12) equal installments of \$13,233.33 on the first day of each calendar month.

6. Rental for Building 2 During Extended Term. The annual Rental (as defined in Section 5.01 of the Lease) for Building 2 for the extended Term shall be \$36,000 per year of the Term payable in twelve (12) equal installments of \$3,000 on the first day of each calendar month, which annual Rental is inclusive of any of Tenant's Proportionate Share of Excess

Operating Cost and Impositions (as those terms are defined in the Lease). For clarity, the annual Rental of \$36,000 payable by Tenant for Building 2 includes Basic Rent and any and all amounts of Tenant's Proportionate Share of Excess Operating Cost and Impositions that otherwise may or would be allocated to Building 2, and no separate or additional amounts for Tenant's Proportionate Share of Excess Operating Cost and Impositions shall be due or payable by Tenant for Building 2.

7. Preparation of Leased Premises. Landlord at its cost and expense agrees to complete the work required for updating and preparation of Building 1 and Building 2 of the Leased Premises as described and identified on Exhibit A attached hereto and made a part hereof ("Landlord Finish Improvements") provided, however, that the Landlord's obligation to pay for Landlord Finish Improvements shall not exceed one hundred twenty-five thousand dollars (\$125,000). Landlord will cause its contractors and subcontractors to perform the Landlord Finish Improvements: (A) in accordance with plans and specifications agreed upon by Tenant and in accordance with any necessary Permits, and (B) in a good and workman like manner and in accordance with all applicable Laws. To the extent the good faith commercially reasonable estimates for the Landlord Finish Improvements obtained by Landlord exceed \$125,000, Landlord and Tenant shall exercise commercially reasonable efforts to work together to prioritize and limit the Landlord Finish Improvements to keep them within that expense limit, or Tenant may elect to pay for that amount of Landlord Finish Improvements that exceed \$125,000. Landlord will commence the Landlord Finish Improvements for Building 1 on or prior to June 1, 2019 and will complete the Landlord Finish Improvements for Building 1 on or prior to August 1, 2019. Landlord will commence the Landlord Finish Improvements for Building 2 on or prior to May 10, 2019 and will complete the Landlord Finish Improvements for Building 2 on or prior to June 17, 2019.

8. Signage for Building 2. Tenant shall have the right at Tenant's sole cost and expense to install an identification sign on the south elevation of Building 2 and/or on the entry door to Building 2. The exact specifications and location of signage for Building 2 shall be subject to the approval of Landlord, which shall not unreasonably be conditioned, withheld or delayed, provided that the sign is consistent with (i) the Sign Regulations of Marion County, Indiana and (ii) the Project's sign criteria and aesthetics of the project.

9. Parking for Building 2. Tenant shall be entitled, on a non-exclusive basis and without additional charge, to use the parking spaces in front of Building 2.

10. Deletion of Article XX of Lease. Article XX – Expansion is hereby deleted from the Lease.

11. Controlling Terms. In the event of any conflict between the terms and provisions of this Sixth Amendment and the terms and the provisions of the Lease, First Amendment, Second Amendment, Third Amendment, Fourth Amendment or the Fifth Amendment, the terms and provisions of this Sixth Amendment shall prevail.

12. Ratification of Lease and Previous Amendments Thereto. Except as otherwise modified or amended by this Sixth Amendment, all other terms and provisions of the Lease, as

amended by the First Amendment, Second Amendment, Third Amendment, Fourth Amendment and the Fifth Amendment, shall remain unmodified, unamended, and in full force and effect. In the Lease, or any instrument, document or other consideration executed or delivered in connection therewith, any reference to the "Lease," shall be deemed and construed to be a reference to the Lease as amended hereby and as amended by the First Amendment, Second Amendment, Third Amendment, Fourth Amendment and Fifth Amendment.

13. Good Faith Negotiations. Landlord Acknowledges Tenant's status as a charter school. Due to the nature of Tenant's charter school status, its charter term, and charter renewal requirements, Landlord covenants that if Tenant's charter is revoked or if funding is materially reduced, Landlord agrees to, in good faith, work with Tenant to renegotiate this Lease or those portions of the Lease impacted by a change in status or funding so that the terms are mutually beneficial to both parties. If Tenant's charter is renewed for an additional charter term beyond the extended Term of the term of the Lease, Landlord and Tenant agree to exercise commercially reasonable efforts to negotiate for an additional extension of the Lease Term or for a new Lease on terms mutually beneficial to both parties.

14. Execution Authority. The individuals signing this Sixth Amendment on behalf of Landlord and Tenant represent and warrant that he or she has the full power and authority to execute this Sixth Amendment and that upon such execution Landlord and Tenant shall be fully bound by each and every provision of the Lease, as amended by this Sixth Amendment.

15. Counterparts; Facsimile. This Sixth Amendment may be executed in any number of identical counterparts, all of which when taken together, shall constitute the same instrument. An executed facsimile copy or emailed copy of this Sixth Amendment shall be deemed an original for all relevant purposes so long as the send party can provide proof of such proper delivery.

IN WITNESS WHEREOF, the parties have duly executed this Sixth Amendment the day and year first written above.

LANDLORD

Douglas Realty Group Noblesville I, LLC

By: B. Douglas M. Aley

PRINTED: B. Douglas M. Aley

ITS: Member

TENANT

Hoosier Academy, Inc.
An Indiana Public Charter School

By: John Marske

PRINTED: John Marske

ITS: Board President

EXHIBIT A

LANDLORD FINISH IMPROVEMENTS

Building 2

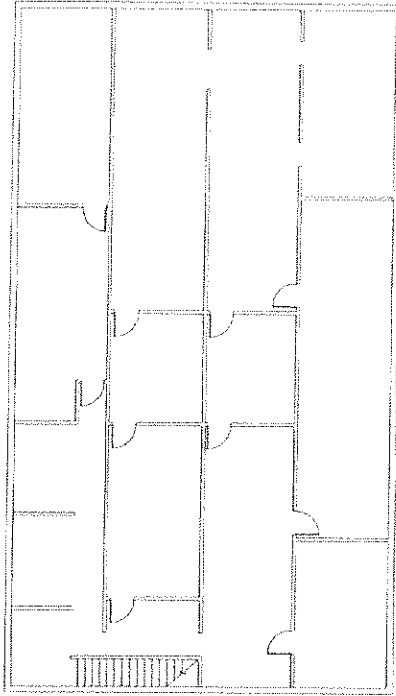
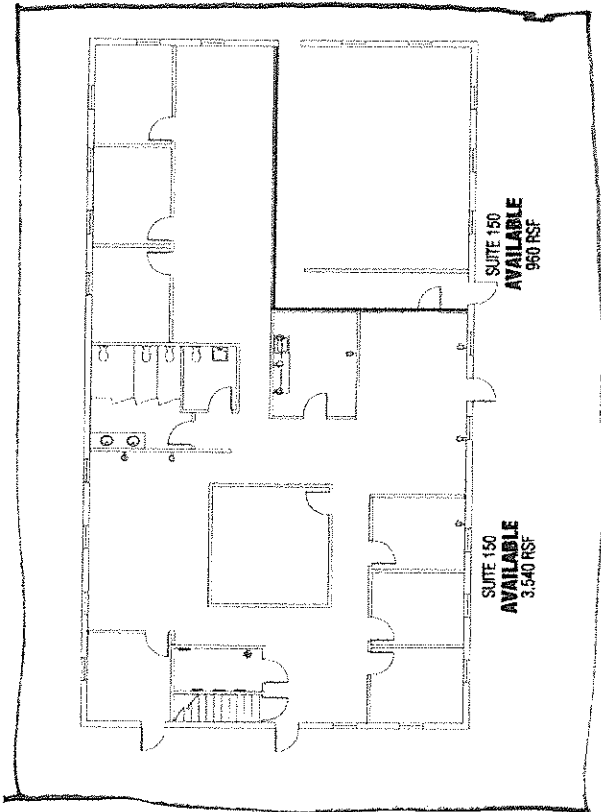
1. Repair and paint exterior wood on south face of building (including removal of the nailed board and conform, repair and paint as need to fix aesthetics)
2. Replace carpet throughout first floor and basement (to be selected by tenant)
3. On main floor level, paint any wall areas that are not currently covered with wall paper (light beige to coordinate with wallcovering color)
4. Repaint basement area to a light grey (to be selected by Tenant)
5. Repair failing cracking cement sidewalk/entry at the exterior entrance
6. Repair asphalt in parking lot and access drive in front of building
7. Obtain quotes for cubical walls for 6 offices (tenant will acquire at its expense)(consider used or pre-owned equipment)

Building 1

1. Repair any drywall as necessary throughout Premises and paint all interior of Premises to a light grey (to be selected by Tenant)
2. Re-tarp and mulch playground
3. Repair and replace base trim throughout space. In atrium (reception) area replace wood base trim so all trim in that area is consistent in size and style.
4. Replace water-damaged ceiling tiles and any other damaged or discolored ceiling tiles
5. Replace window blinds in glass atrium and classrooms
6. Provide overall deep cleaning (floors, walls, windows) of Premises
7. Repair hole in fence on the playground
8. Add a gate to the playground fence to connect the two buildings
9. Add cement walkway from the back stairs exit to the front sidewalk and to the gate entry that is being added
10. Repair asphalt in parking lot and access drive in front of building
11. Repair failing or cracking cement sidewalk fronting building

Exhibit A-2

First Floor



SUITE B100
AVAILABLE
4,500 RSF

SUITE 150
AVAILABLE
960 RSF

SUITE 150
AVAILABLE
3,540 RSF

FIRST FLOOR FURNISHMENT PLAN NOT TO SCALE

NORTHEAST OFFICE CENTRE BLDG #2
5650 CAITO DRIVE
INDIANAPOLIS, IN

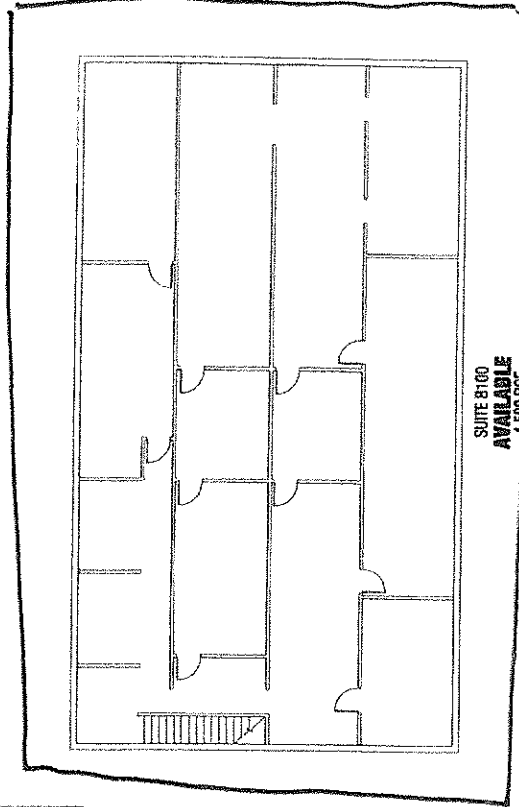
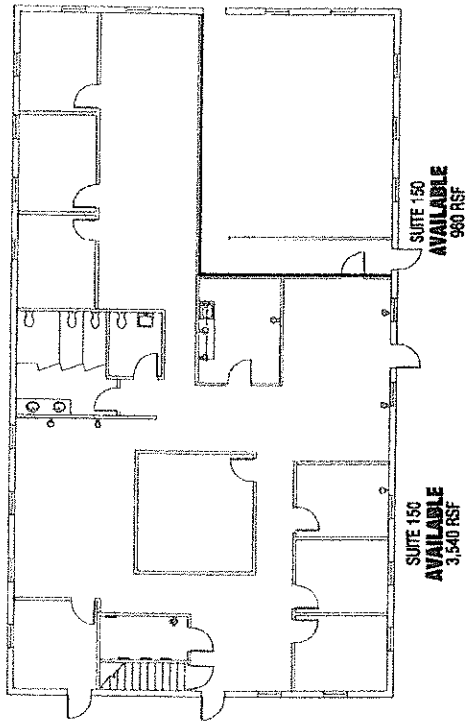
6925 EAST 96TH ST., SUITE 105
INDIANAPOLIS, IN 46250
317-286-0661 VOICE
317-288-0753 FAX
WWW.CURRANARCHITECTURE.COM

CURRAN
ARCHITECTURE

CURRAN ARCHITECTURE, INC. IS AN EQUAL OPPORTUNITY AFFIRMATIVE ACTION EMPLOYER. WE DO NOT DISCRIMINATE ON THE BASIS OF RACE, GENDER, RELIGION, NATIONAL ORIGIN, ANCESTRY, COLOR, SEX, OR AGE. CURRAN ARCHITECTURE, INC. IS AN EQUAL OPPORTUNITY AFFIRMATIVE ACTION EMPLOYER. WE DO NOT DISCRIMINATE ON THE BASIS OF RACE, GENDER, RELIGION, NATIONAL ORIGIN, ANCESTRY, COLOR, SEX, OR AGE.

Exhibit A-3

Basement Area



FIRST FLOOR & BASEMENT PLAN NOT TO SCALE 7/17/15

NORTHEAST OFFICE CENTRE BLDG #2
5650 CAITO DRIVE
INDIANAPOLIS, IN

6925 EAST 96TH ST., SUITE 105
INDIANAPOLIS, IN 46250
317 . 288 . 0681 VOICE
317 . 288 . 0753 FAX
WWW.CURRANARCHITECTURE.COM

CURRAN ARCHITECTURE

THIS DRAWING WAS PREPARED BY CURRAN ARCHITECTURE, INC. FOR THE ARCHITECT. CURRAN ARCHITECTURE, INC. IS NOT RESPONSIBLE FOR ANY ERRORS OR OMISSIONS. THE ARCHITECT'S PROFESSIONAL LIABILITY INSURANCE POLICY DOES NOT COVER THIS DRAWING. THE ARCHITECT'S LIABILITY IS LIMITED TO THE AMOUNT OF THE ARCHITECT'S PROFESSIONAL LIABILITY INSURANCE. CURRAN ARCHITECTURE, INC. IS A REGISTERED PROFESSIONAL ARCHITECTURE FIRM IN THE STATE OF INDIANA. CURRAN ARCHITECTURE, INC. IS A MEMBER OF THE NATIONAL ARCHITECTURAL ASSOCIATION (NAA).